

PORT AUTHORITY

# Port Authority® Hybrid Soft Shell Jacket. J787



Quilted front and back panels join a wind-resistant, water-resistant soft shell to make the Hybrid a trend-right stretch performance jacket with urban edge.

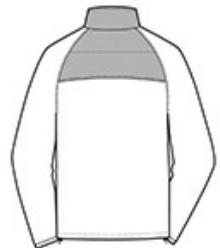
- 100% polyester knit shell bonded to a water-resistant film insert and a 100% polyester microfleece lining
- 100% nylon woven overlays
- 1000MM fabric waterproof rating
- 1000G/M<sup>2</sup> fabric breathability rating
- 
- Reverse coil zippers
- Interior storm flap with chin guard
- Zippered right chest pocket
- Front zippered pockets
- Port Pocket™ for decoration access
- Binding at cuffs
- Open hem with adjustable locking draw cords

### CARE INSTRUCTIONS

Machine wash cold with like colors. Do not bleach or use fabric softener. Tumble dry low. Remove promptly. Do not iron. Do not dry clean.



front



back

### HOW TO MEASURE



#### CHEST WIDTH

Measure under the arm and around the fullest part of the chest with arms down, keeping tape horizontal.

### SIZE CHART

	XS	S	M	L	XL	2XL	3XL	4XL
Chest	32-34	35-37	38-40	41-43	44-46	47-49	50-53	54-57

### COLOR INFORMATION



Deep Black  
PMS BLACK C



Skydiver Blue/  
Grey Steel  
PMS 7462 C



Smoke Grey / Grey  
Steel  
PMS Cool Grey 11  
C