



Our C-FREE® carbon neutral polos not only feel good, they do good. With C-FREE, we measured the carbon footprint of these styles and we're neutralizing their impact with Carbonfree® certification.

- 4.9-ounce, 100% recycled polyester jersey
- Snag-proof
- Moisture-wicking
- Self-fabric collar
- 3-button placket
- Grey buttons include 31% recycled content
- Side vents

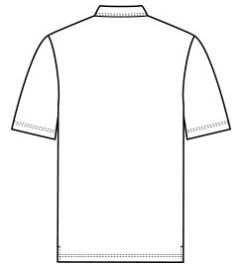
*Due to the nature of polyester performance fabrics, special care must be taken throughout the printing process.*

**CARE INSTRUCTIONS**

Machine Wash Cold With Like Colors. Do Not Use Fabric Softener. Do Not Bleach. Tumble Dry Low. Remove Promptly. Cool Iron If Needed.



front



back

**HOW TO MEASURE**



**CHEST WIDTH**

Measure under the arm and around the fullest part of the chest with arms down, keeping tape horizontal.

**SIZE CHART**

	XS	S	M	L	XL	2XL	3XL	4XL
Chest	32-34	35-37	38-40	41-43	44-46	47-49	50-53	54-57

**COLOR INFORMATION**



Deep Black  
PMS BLACK C



Grey Steel  
PMS NO MATCH



Rich Red  
PMS 7427C



True Navy  
PMS 533C



True Royal  
PMS 7687C



White