

SPEC SHEET + MEASUREMENTS

Brooks Brothers

Brooks Brothers® Women's Open-Neck Satin Blouse.

BB18009

Product photo



The soft satin fabric of this versatile blouse has a subtle sheen, lending an elegant look to any outfit. Designed for an easy fit to keep you feeling confident and comfortable.

- 4.1-ounce, 100% polyester satin
- Anti-static finish
- Open v-neck popover
- Wide box pleat at back yoke
- Gathers at shoulders and cuffs
- Three self-fabric-covered buttons at cuffs
- Side vents

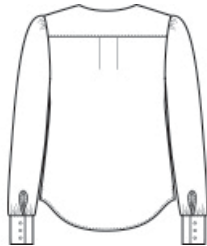
CARE INSTRUCTIONS

Machine Wash Cold With Like Colors. Do Not Bleach. Tumble Dry Low. Remove Promptly. Cool Iron If Necessary.

Sketches



front



back

SPEC SHEET + MEASUREMENTS

Brooks Brothers

Brooks Brothers® Women's Open-Neck Satin Blouse.
BB18009

PRODUCT MEASUREMENTS

	XS	S	M	L	XL	2XL	3XL	4XL
Size	2	4/6	8/10	12/14	16/18	20/22	24/26	28/30
Body Length at Back	26 1/2	27	27 1/2	28	28 1/2	29	29 1/2	30
Bust	19	20	21	22 1/2	24	25 1/2	27 1/2	29 1/2
Sleeve Length from Center Back	31 1/2	32	32 1/2	33 1/8	33 3/4	34 3/8	34 3/4	35 1/8

Body Length at Back: Measured from high point shoulder to finished hem at back.

Bust: Measured across the chest one inch below armhole when laid flat.

Sleeve Length from Center Back: Measure from Center Back neck to shoulder point to sleeve hem.

SIZE CHARTS

	XS	S	M	L	XL	2XL	3XL	4XL
Size	2	4/6	8/10	12/14	16/18	20/22	24/26	28/30
Bust	32-34	35-36	37-38	39-41	42-44	45-47	48-51	52-55

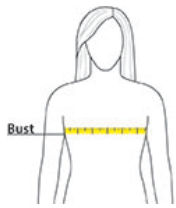
SPEC SHEET + MEASUREMENTS

Brooks Brothers

Brooks Brothers® Women's Open-Neck Satin Blouse.

BB18009

HOW TO MEASURE



BUST

Measure under the arm and around the fullest part of the bust with arms down, keeping tape horizontal.

COLORS

Please note: PMS code information is shown only when an exact match is available.



Deep Black
PMS BLACK
C



Heritage Blue
PMS 2708C



Night Navy
PMS 4280C



Shadow Grey
PMS COOL
GRAY 10C