

SPEC SHEET + MEASUREMENTS

CornerStone

CornerStone® ANSI 107 Class 2 Segmented Tape Tee.
CS204

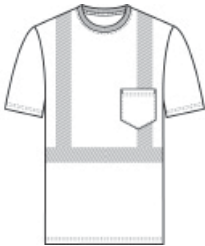
Product photo



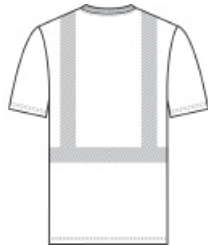
This breathable, moisture-wicking mesh tee delivers high visibility and comfort in Class 2 environments.

- 4.1-ounce, 100% polyester birdseye mesh
- 1x1 rib knit neck
- Back neck tape
- Segmented, durable, reflective 2-inch tape meets ANSI 107 requirements and provides 360-degree visibility on body and easy movement
- Left chest pocket

Sketches



front



back

SPEC SHEET + MEASUREMENTS



CornerStone® ANSI 107 Class 2 Segmented Tape Tee.
CS204

PRODUCT MEASUREMENTS

	S	M	L	XL	2XL	3XL	4XL	5XL
Body Length at Back	29	29 1/2	30	31	32	32 1/2	33	33 1/2
Chest	20 1/2	22	23 1/2	25	26 1/2	28 1/2	30 1/2	32 1/2
Sleeve Length from Center Back	18 1/2	19 1/4	20	20 3/4	21 1/2	22 1/4	23	23 3/4
Chest Pocket Height	5	5 1/4	5 1/4	5 1/4	5 1/4	5 1/4	5 1/2	5 1/2
Chest Pocket Width	4 1/4	4 1/2	4 1/2	4 1/2	4 1/2	4 1/2	4 3/4	4 3/4

Body Length at Back: Measured from high point shoulder to finished hem at back.

Chest: Measured across the chest one inch below armhole when laid flat.

Sleeve Length from Center Back: Measure from Center Back neck to shoulder point to sleeve hem.

Chest Pocket Height: Measure from top to bottom at center.

SPEC SHEET + MEASUREMENTS

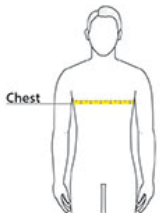


CornerStone® ANSI 107 Class 2 Segmented Tape Tee.
CS204

SIZE CHARTS

	S	M	L	XL	2XL	3XL	4XL	5XL
Chest	35-37	38-40	41-43	44-46	47-49	50-53	54-57	58-60

HOW TO MEASURE



CHEST

Measure under the arm and around the fullest part of the chest with arms down, keeping tape horizontal.

COLORS

Please note: PMS code information is shown only when an exact match is available.



Safety Orange Safety Yellow