

SPEC SHEET + MEASUREMENTS

CornerStone

CornerStone® Duck Bonded Soft Shell Vest. CSV60

Product photo



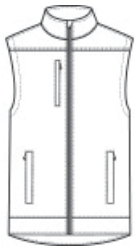
Soft shell technology meets durable duck cloth in this hardworking, water-resistant vest that has an ultra-warm fleece interior.

- 100% cotton canvas shell with a DWR finish bonded to a water-resistant film insert and 100% polyester microfleece lining
- Metal front zipper
- Zippered chest pocket
- Zippered hand pockets
- Three interior pockets

CARE INSTRUCTIONS

Machine Wash Cold. Gentle Cycle. Only Non-Chlorine. Bleach When Needed. Line Dry. Cool Iron If Necessary. Do Not Dry Clean.

Sketches



front



back

SPEC SHEET + MEASUREMENTS



CornerStone® Duck Bonded Soft Shell Vest. CSV60

PRODUCT MEASUREMENTS

	XS	S	M	L	XL	2XL	3XL	4XL
Body Length at Back	26 1/2	27 1/2	28 1/2	29 1/2	30 1/2	31 1/2	32	32 1/2
Chest	19 1/2	21	22 1/2	24	25 1/2	27	29	31

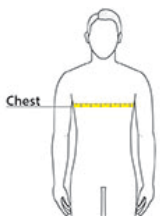
Body Length at Back: Measured from high point shoulder to finished hem at back.

Chest: Measured across the chest one inch below armhole when laid flat.

SIZE CHARTS

	XS	S	M	L	XL	2XL	3XL	4XL
Chest	32-34	35-37	38-40	41-43	44-46	47-49	50-53	54-57

HOW TO MEASURE



CHEST

Measure under the arm and around the fullest part of the chest with arms down, keeping tape horizontal.

SPEC SHEET + MEASUREMENTS



CornerStone[®] Duck Bonded Soft Shell Vest. CSV60

COLORS

Please note: PMS code information is shown only when an exact match is available.



Black
PMS BLACK
C



Duck Brown
PMS 7568C