

SPEC SHEET + MEASUREMENTS

PORT AUTHORITY.

Port Authority® Women's All-Season II Jacket. L304

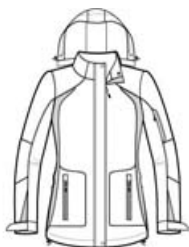
Product photo



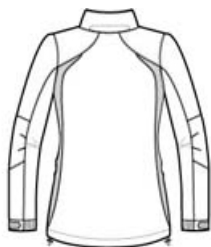
Our All-Season II Jacket is water-repellent and critically seam sealed. Colorblock panels at the sides and sleeves give it year-round appeal.

- 100% Taslan nylon shell
- 4.7-ounce, 100% microfleece body lining
- 100% polyester sleeve lining for easy on/off
- 3000MM fabric waterproof rating
- Critically seam-sealed for added waterproof protection
- 3000G/M² fabric breathability rating
- Zip-off hood
- Full-length exterior storm flap with hook and loop closure
- Two-way zipper
- Interior pocket
- Interior zippered pocket
- Articulated elbows for greater mobility
- Left sleeve zippered pocket
- Port Pocket™ for decoration access
- Adjustable self-fabric tab cuffs with hook and loop closures
- Front zippered pockets
- Drop tail hem with drawcord and toggles for adjustability

Sketches



front



back

CARE INSTRUCTIONS

Machine wash cold with like colors. Only non-chlorine bleach when needed. Tumble dry low. Cool iron if needed. Do not dry clean.

SPEC SHEET + MEASUREMENTS

PORT AUTHORITY

Port Authority® Women's All-Season II Jacket. L304

PRODUCT MEASUREMENTS

| | XS | S | M | L | XL | XXL | 3XL | 4XL |
|----------------------|--------|--------|--------|--------|--------|--------|--------|--------|
| Body Length at Back | 27 | 27 1/2 | 28 | 29 | 30 | 31 | 31 1/2 | 32 |
| Body Length at Front | 27 | 27 1/2 | 28 | 29 | 30 | 31 | 31 1/2 | 32 |
| Bust | 20 1/4 | 21 1/4 | 22 1/4 | 23 1/4 | 24 1/4 | 25 1/4 | 26 3/4 | 28 1/4 |
| Sleeve Length | 32 1/2 | 33 | 33 1/2 | 34 1/8 | 34 3/4 | 35 3/8 | 36 1/8 | 36 7/8 |

Body Length at Back: Measured from high point shoulder to finished hem at back.

Body Length at Front: Measure from high point shoulder to lowest point of hem at front.

Bust: Measured across the chest one inch below armhole when laid flat.

Sleeve Length: Start at center of neck and measure down shoulder, down sleeve to hem.

SIZE CHARTS

| | XS | S | M | L | XL | XXL | 3XL | 4XL |
|------|-------|-------|-------|-------|-------|-------|-------|-------|
| Bust | 32-34 | 35-36 | 37-38 | 39-41 | 42-44 | 45-47 | 48-51 | 52-55 |
| Size | 2 | 4/6 | 8/10 | 12/14 | 16/18 | 20/22 | 24/26 | 28/30 |

SPEC SHEET + MEASUREMENTS

PORT AUTHORITY.

Port Authority® Women's All-Season II Jacket. L304

HOW TO MEASURE



BUST

Measure under the arm and around the fullest part of the bust with arms down, keeping tape horizontal.

COLORS

Please note: PMS code information is shown only when an exact match is available.



Black/ Black
PMS BLACK
C



Snorkel Blue/
Black
PMS 2145C



True Navy/
Iron Grey
PMS 533C