

# SPEC SHEET + MEASUREMENTS



## OGIO® Women's Transcend Full-Zip. LOG860

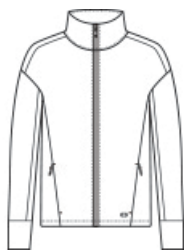
### Product photo



Perfectly polished, this elevated, sueded full-zip performs with stretch and transcends the line between work and leisure.

- 9.1-ounce, 50/44/6 rayon/recycled poly/spandex double knit fleece
- OGIO heat transfer label for tag-free comfort
- Neck taping
- Cadet collar
- Embossed OGIO logo locker loop
- Reverse coil zipper with debossed, brushed silver O icon pull
- Two-piece sleeves
- Front and back seaming
- Forward shoulders
- Hidden zippered pockets with silver pulls
- Banded cuffs
- Embroidered O icon on left hem

### Sketches



front



back

### CARE INSTRUCTIONS

Turn Garment Inside Out. Machine Wash Cold With Like Colors. Do Not Use Fabric Softener. Do Not Bleach. Tumble Dry Low. Remove Promptly. Cool Iron, If Necessary.

# SPEC SHEET + MEASUREMENTS



## OGIO® Women's Transcend Full-Zip. LOG860

### PRODUCT MEASUREMENTS

	XS	S	M	L	XL	2XL	3XL	4XL
Size	2	4/6	8/10	12/14	16/18	20/22	24/26	28/30
Body Length at Back	23	23 1/2	24	24 1/2	25	25 1/2	26	26 1/2
Bust	18 1/2	19 1/2	20 1/2	22	23 1/2	25	27	29
Sleeve Length from Center Back	30 1/2	31	31 1/2	32 1/8	32 3/4	33 3/8	33 3/4	34 1/8

**Body Length at Back:** Measured from high point shoulder to finished hem at back.

**Bust:** Measured across the chest one inch below armhole when laid flat.

**Sleeve Length from Center Back:** Measure from Center Back neck to shoulder point to sleeve hem.

### SIZE CHARTS

	XS	S	M	L	XL	2XL	3XL	4XL
Size	2	4/6	8/10	12/14	16/18	20/22	24/26	28/30
Bust	32-34	35-36	37-38	39-41	42-44	45-47	48-51	52-55

# SPEC SHEET + MEASUREMENTS



OGIO® Women's Transcend Full-Zip. LOG860

## HOW TO MEASURE

---



### **BUST**

Measure under the arm and around the fullest part of the bust with arms down, keeping tape horizontal.

## COLORS

---

Please note: PMS code information is shown only when an exact match is available.



Blacktop  
PMS Black C



Blue Mist  
PMS 2158C



Tarmac Grey  
PMS 7540C