

# SPEC SHEET + MEASUREMENTS



## Mercer+Mettle® Puffy Jacket. MM7210

### Product photo



Professional and polished while protecting from the elements, this lofty, high-performing puffy is intentionally designed to lend dependable warmth and transitional style for downtown or out-of-town. The DWR finish sheds moisture while the blown-in synthetic insulation gives the soft, lightweight and pliable effect of down with easy washability. **Fabric+Weight**

- 100% polyester
- 5K/3K waterproof breathable fabric
- 12-ounce, 100% polyester blown insulation

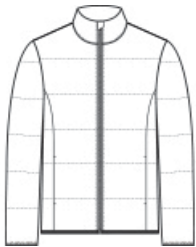
### Features+Benefits

- Zip-through collar
- Molded front zipper
- Hidden, zippered hand pockets
- Elastic binding at cuffs and hem

### CARE INSTRUCTIONS

Machine Wash Cold Gentle Cycle With Like Colors. Only Non-Chlorine Bleach When Needed. Tumble Dry Low. Cool Iron If Necessary. Do Not Dry Clean.

### Sketches



front



back

# SPEC SHEET + MEASUREMENTS



## Mercer+Mettle® Puffy Jacket. MM7210

### PRODUCT MEASUREMENTS

	XS	S	M	L	XL	2XL	3XL	4XL
Body Length at Back	25 1/2	26 1/2	27 1/2	28 1/2	29 1/2	30 1/2	31 1/4	32
Chest	21	22 1/2	24	25 1/2	27 1/2	29 1/2	32	35
Sleeve Length from Center Back	35 1/4	36	36 3/4	37 1/2	38 1/4	39	39 3/4	40 1/2

**Body Length at Back:** Measured from high point shoulder to finished hem at back.

**Chest:** Measured across the chest one inch below armhole when laid flat.

**Sleeve Length from Center Back:** Measure from Center Back neck to shoulder point to sleeve hem.

### SIZE CHARTS

	XS	S	M	L	XL	2XL	3XL	4XL
Chest	32-34	35-37	38-40	41-43	44-47	48-51	52-56	57-61

# SPEC SHEET + MEASUREMENTS



Mercer+Mettle® Puffy Jacket. MM7210

## HOW TO MEASURE

---



### CHEST

Measure under the arm and around the fullest part of the chest with arms down, keeping tape horizontal.

## COLORS

---

Please note: PMS code information is shown only when an exact match is available.



Anchor Grey  
PMS 426C



Deep Black  
PMS BLACK  
C



Night Navy  
PMS 532C



Townsend  
Green