

## SPEC SHEET + MEASUREMENTS



### New Era® Power Long Sleeve Hoodie. NEA229

#### Product photo



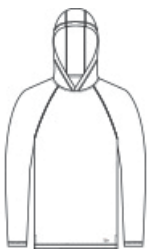
With moisture wicking and stretch, you'll feel the power of performance in this hoodie that's also brushed for comfort.

- 4.7-ounce, 91/9 polyester/spandex
- Debossed New Era neck taping
- Heat transfer label for tag-free comfort
- 3-panel hood
- Raglan sleeves
- Reflective silver heat transfer New Era flag logo on left hem

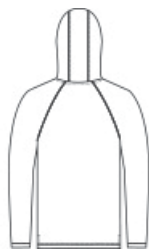
#### CARE INSTRUCTIONS

Machine Wash Cold With Like Colors. Do Not Use Fabric Softener. Only Non-Chlorine Bleach When Needed. Tumble Dry Low. Remove Promptly. Cool Iron If Necessary.

#### Sketches



front



back

# SPEC SHEET + MEASUREMENTS



## New Era® Power Long Sleeve Hoodie. NEA229

### PRODUCT MEASUREMENTS

	XS	S	M	L	XL	2XL	3XL	4XL
Body Length at Back	26 1/2	27 1/2	28 1/2	29 1/2	30 1/2	31 1/2	32 1/4	33
Chest	18	19 1/2	21	22 1/2	24 1/2	26 1/2	29	32
Raglans and Dolmans Sleeve Length	33 1/4	34	34 3/4	35 1/2	36 1/4	37	37 3/4	38 1/2

**Body Length at Back:** Measured from high point shoulder to finished hem at back.

**Chest:** Measured across the chest one inch below armhole when laid flat.

**Raglans and Dolmans Sleeve Length:** Measure from neck edge to finished hem.

### SIZE CHARTS

	XS	S	M	L	XL	2XL	3XL	4XL
Chest	32-34	35-37	38-40	41-43	44-47	48-51	52-56	57-61

# SPEC SHEET + MEASUREMENTS



New Era® Power Long Sleeve Hoodie. NEA229

## HOW TO MEASURE

---



### CHEST

Measure under the arm and around the fullest part of the chest with arms down, keeping tape horizontal.

## COLORS

---

Please note: PMS code information is shown only when an exact match is available.



Black  
PMS BLACK  
C



Shadow Grey  
Heather  
PMS COOL  
GREY 10C



True Navy  
PMS 533C