

SPEC SHEET + MEASUREMENTS



Next Level Apparel® Heavyweight Long Sleeve Tee.

NL7211

Product photo



- 6.8-ounce, 100% combed ring spun cotton, 16 singles
- 1x1 rib knit crewneck collar and cuffs
- Shoulder to shoulder taping
- Drop shoulder
- Tear-away label
- Side seamed
- Oversized fit

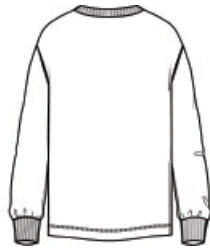
CARE INSTRUCTIONS

Machine Wash Cold. Only Non-Chlorine Bleach When Needed.
Tumble Dry Low. Do Not Iron Decoration.

Sketches



front



back

SPEC SHEET + MEASUREMENTS



Next Level Apparel® Heavyweight Long Sleeve Tee.
NL7211

PRODUCT MEASUREMENTS

	XS	S	M	L	XL	2XL	3XL
Body Length at Back	27 3/4	28 3/4	29 3/4	30 3/4	31 3/4	32 3/4	33 3/4
Chest	19 1/2	21	22 1/2	24	26	28	30
Set in Sleeve Length	23	23 1/2	24	24 1/2	25	25 1/2	26

Body Length at Back: Measured from high point shoulder to finished hem at back.

Chest: Measured across the chest one inch below armhole when laid flat.

Set in Sleeve Length: Measure from Center Back neck to shoulder point to sleeve hem.

SIZE CHARTS

	XS	S	M	L	XL	2XL	3XL
Chest	32-36	36-39	39-42	42-45	45-49	49-53	53-57

SPEC SHEET + MEASUREMENTS



Next Level Apparel® Heavyweight Long Sleeve Tee.
NL7211

HOW TO MEASURE



CHEST

Measure under the arm and around the fullest part of the chest with arms down, keeping tape horizontal.

COLORS

Please note: PMS code information is shown only when an exact match is available.



Black
PMS 426C



Bone
PMS COOL
GRAY 1C



Clay
PMS 7516C



Graphite
Black
PMS 4287C



Light Olive
PMS 4220C



Midnight Navy
PMS 2380C



Red
PMS 711C



Shiitake
PMS 410C



Tan
PMS 4268C



White
PMS 663C