

SPEC SHEET + MEASUREMENTS



OGIO® Motion Polo. OG152

Product photo



Set yourself in motion with this elevated, easy moving polo that feels lux and performs with pill and snag resistance—whether you're on the job or on the go.

- 6.5-ounce, 84/10/6 poly/rayon/spandex with stay-cool wicking technology
- UPF rating of 30
- OGIO heat transfer label for tag-free comfort
- Embossed OGIO neck taping
- Self-fabric collar
- 1-button placket with merrow stitch bar tack
- Sandwich tone buttons
- Raglan sleeves
- Merrow stitching detail at shoulders
- Embroidered dyed-to-match O logo icon on left sleeve
- Side vents

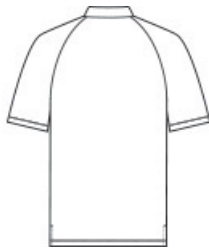
CARE INSTRUCTIONS

Machine Wash Cold With Like Colors. Do Not Use Fabric Softener. Do Not Bleach. Tumble Dry Low. Cool Iron If Necessary.

Sketches



front



back

SPEC SHEET + MEASUREMENTS



OGIO® Motion Polo. OG152

PRODUCT MEASUREMENTS

	XS	S	M	L	XL	2XL	3XL	4XL
Body Length at Back	27 1/4	28 1/4	29 1/4	30 1/4	31 1/4	32 1/4	32 3/4	33 1/4
Chest	17 1/2	19	20 1/2	22	23 1/2	25	27	29
Raglans and Dolmans Sleeve Length	16 1/4	17	17 3/4	18 1/2	19 1/4	20	20 3/4	21 1/2

Body Length at Back: Measured from high point shoulder to finished hem at back.

Chest: Measured across the chest one inch below armhole when laid flat.

Raglans and Dolmans Sleeve Length: Measure from neck edge to finished hem.

SIZE CHARTS

	XS	S	M	L	XL	2XL	3XL	4XL
Chest	32-34	35-37	38-40	41-43	44-46	47-49	50-53	54-57

SPEC SHEET + MEASUREMENTS



OGIO® Motion Polo. OG152

HOW TO MEASURE



CHEST

Measure under the arm and around the fullest part of the chest with arms down, keeping tape horizontal.

COLORS

Please note: PMS code information is shown only when an exact match is available.



Blacktop
PMS BLACK
C



Blue Mist
PMS 2158C



Greystone
PMS COOL
GREY 7C



Spar Blue
PMS 2189C



Tarmac Grey
PMS 7540C