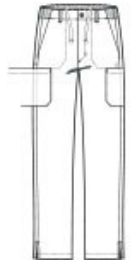




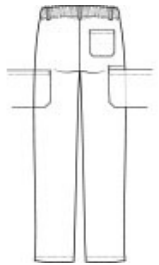
# WonderWink® Men's Premiere Flex™ Cargo Pant WW5058



- 78/20/2 poly/rayon/spandex
- Flat front w aistband with belt loops
- Full draw string w aist w ith elastic back
- Button opening w ith zipper fly
- Front slash pockets
- Cargo pockets w ith interior pocket
- Single back pocket
- Straight leg
- Side vents
- WonderWink heat transfer logo at front left pocket
- Modern fit
- 31-inch inseam



front

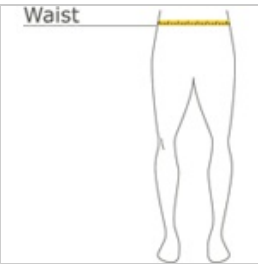


back

### CARE INSTRUCTIONS

Machine Wash Cold With Like Colors. Gentle Cycle. Use Only Non-Chlorine Bleach When Needed. Tumble Dry Low. Remove Promptly From Dryer. Cool Iron When Needed.

### HOW TO MEASURE



#### WAIST

Measure around the smallest part of the natural waist.

### SIZE CHART

	XS	S	M	L	XL	2XL	3XL	4XL	5XL
Waist	25-26	27-29	30-32	33-36	37-40	41-44	45-48	49-52	53-57

### COLOR INFORMATION



Black  
PMS PROCESS  
BLACK C



Ceil Blue  
PMS 659C



Navy  
PMS 654C



Pewter  
PMS 432C



Royal  
PMS 2145C



Teal Blue  
PMS 320C



White  
PMS WHITE



Wine  
PMS 222C